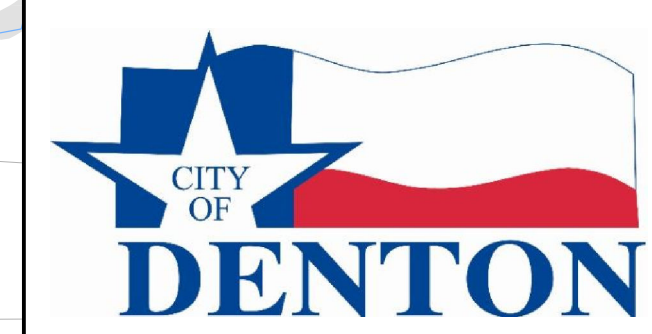
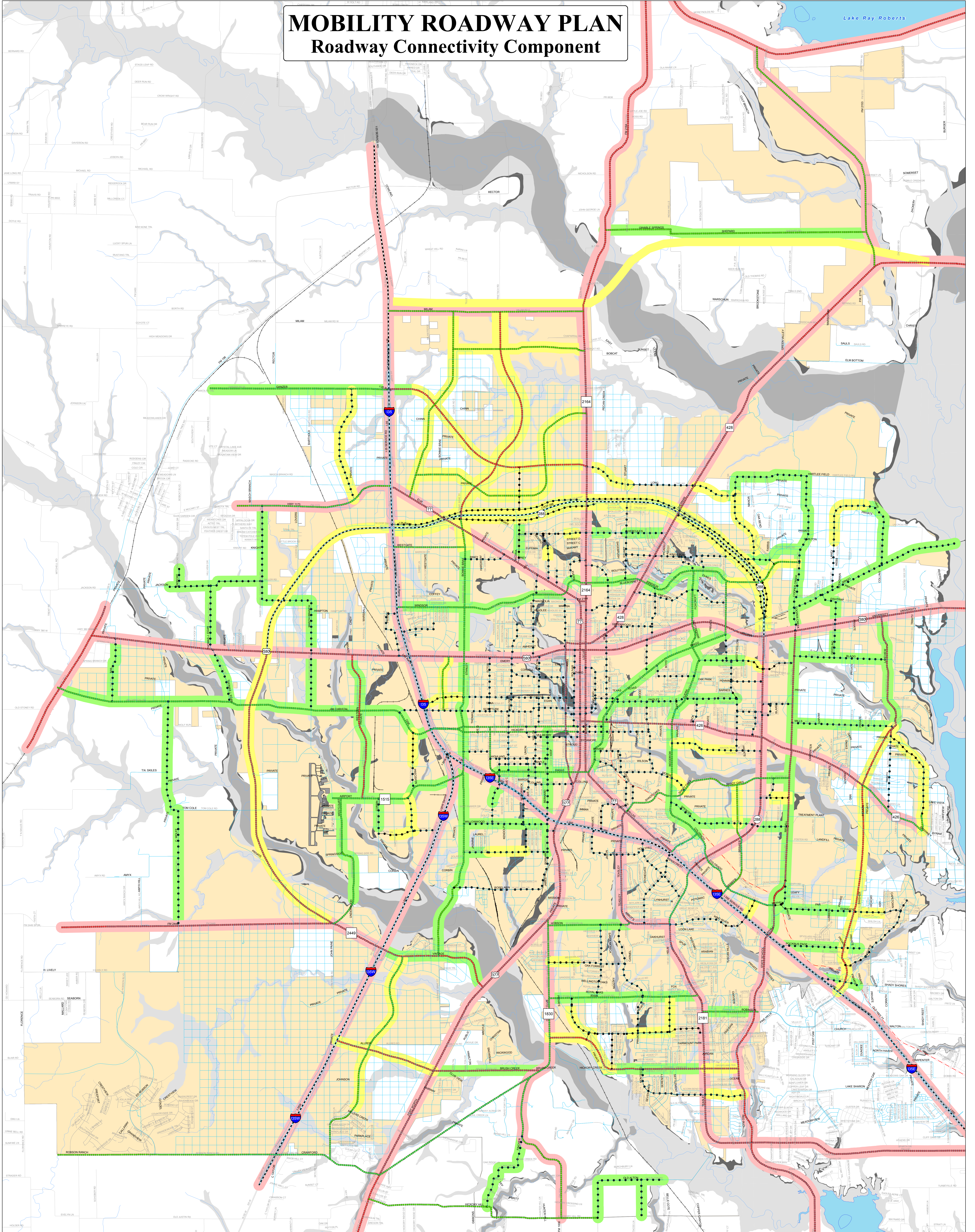


MOBILITY ROADWAY PLAN

Roadway Connectivity Component

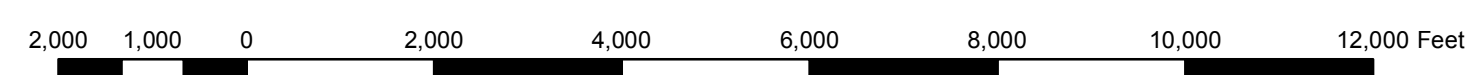


Resolution R59-065 replaces 1988 Thoroughfare Plan Dec. 15, 1998
 Amended Ordinances:
 99-036 Aug 17, 1999
 2001-036 Jan 16, 2001
 2002-023 Aug 15, 2002
 2004-034 Feb 3, 2004
 2004-061 March 2, 2004
 2004-348 Nov 2, 2004
 2006-249 Sep 12, 2006
 2006-345 Dec 12, 2006
 GD007-0002 Sep 12, 2007
 2011-117 July 19, 2011
 Map last updated Aug 3, 2011



Legend

- Primary Major Arterial
- Secondary Major Arterial
- Modified Secondary Arterial
- Freeway
- Road Not Yet Built - Future
- Existing Road Not to Class Standard
- Maintained by TXDOT
- Rails to Trails Reserve
- Outer Loop
- Collector
- Railroads
- 100 Year Floodplain = A
- 100 Year Floodplain = FW
- 500 Year Floodplain = X500
- Area Lakes
- Denton Citylimits



Notes

1. Guideline minimum spacing for arterials and collectors for new development is detailed in the Transportation Design Criteria Manual.
2. Roadway classifications shown are considered to be a minimum standard and could be superseded by a more stringent classification as required by the development's Traffic Impact Analysis.
3. Outer loop shown to indicate a preferred corridor consistent with NCTCOG planning documents.
4. Mayhill Road is to be constructed as a metropolitan highway to TXDOT standards.

This map is a graphic representation prepared by the City of Denton, Engineering/Planning GIS department and is intended for use only as a reference. Data depicted here is not guaranteed for accuracy and may be subject to revision at any time without notification. A Registered Surveyor for the State of Texas was not consulted. For Survey level accuracy, supervision and certification of the produced data by a Registered Professional Land Surveyor for the State of Texas would have to be performed.